

TECHNOPLAT 708

Semi-Automatic Turntable

Stretch Wrapping Machine



ROBOPAC 

Touch
the
Technology



Feel
the
Future

technology

The new touchscreen control panel delivers 9 customizable wrap positions (5 upward/4 downward). Each position can be programmed with film tensioning, film pre-stretch, number of wraps, rotation speed, carriage speed and film roping.

The 708 also provides 6 programs that can be set and retrieved based on your load and desired wrap settings. Lock your operators into a single program, allow them complete access to all settings, or provide them access to several programs. You control what they can or can't change.

Pro-Active corner compensation combines the latest in load cell and encoder technologies giving you the ability to apply film to any load securely without crushing the corners of



your load, while increasing containment on the flat sides.

Multi-level containment force settings on the control panel deliver optimal containment force at each level and enable delivery of the highest pre-stretch levels.

Strategic film placement allows you to place the film exactly where it has the most impact on load containment.

You Control...

Pre-stretch



Force to Load



Roping



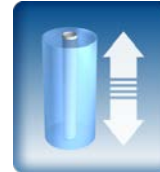
Wrap Pattern



Rotation Speed



Carriage Speed



standard features

7-inch color touchscreen provides a simple, easy-to-use interface to the most advanced, technologically robust semi-automatic turntable on the market.

Additional coupled rollers beef up the turntable's already smooth rotation and allow loading from all sides.

Lift carriage motor delivers precise control of its position to within 0.2 inches when used in automatic mode.

A cleaning brush has been added underneath the turntable to help keep the rollers clean, increasing the lifespan of the rollers.

Base plate mounting has been increased with additional bolts to improve stability and durability.

65-inch turntable is powered by a 1 hp motor. Turntable can handle up to 4,400 lb load and rotate to 12 rpm.

Photocell automatically detects top of load and utilizes infrared sensors that provide better readings on dark and/or shiny products that can provide false readings with traditional sensors.

The film carriage's anti-fall device protects workers and products in the unlikely event of chain slippage or breakage.

Emergency stop button is located below control panel.

NEMA 12 control panel enclosure protects against dust, falling dirt, fibers and lint. It also protects from dripping water and other noncorrosive liquids. It's also resistant to damage from external condensation of noncorrosive liquids.

Tubular cold bent steel mast provides superior rigidity, minimizing torque and flex. Heavy duty chain provides smooth and accurate carriage travel up and down.

Rotoplates are forklift portable from both the front and back.

The 708 is CE approved, conforming to strict European standards.

5 year warranty.

overview

Simply: Automation that WORKS for you

The Technoplat 708 features an S Winding Pattern Roll Carriage with Quick Load System that provides 40% more film contact than the W Winding pattern (commonly used by competitors) while providing better control of film through the roll carriage and fewer film breaks.

Our automatic cut and swipe system is standard on both machines and keeps your fork truck drivers on the truck. This feature saves an average of 2 minutes of labor per load, which equals \$60,000 in labor savings over a five year life of the machine.

Automatic cut and weld device is an available option for difficult film tail sealing applications such as cold areas, low cling film applications, automated retrieval systems or when shipping on open trucks

The 65" diameter turntable is made from 3/8" diamond plated steel turntable which keeps loads from shifting, offers added slip resistance when someone steps on the turntable and easily accom-

modates a 40" X 48" load with no overhang.

The roll carriage is located on operator side of mast to keep the operator out of the wrapping area. Four selectable wrap patterns allow you to optimize each of your load types, reduce damage, improve productivity and reduce film costs.

Ability to adjust all wrapping parameters to meet the specific needs of each load: pre-stretch; containment force; top & bottom wraps; turntable speed; overlap; overwrap.

Our load cell controls wrapping/containment force and is the best technology available for corner compensation below 28 rpm.

A scale package option is available to weigh your wrapped pallet while still on the turntable, providing shipping data without having to relocate the load.

The Technoplat 708 PVS roll carriage utilizes 2 VAC motors with precise and variable pre-stretch up to 400% delivered on the load.



turntable

Improved Performance and Extended Roller Life

The new turntable base has front and rear forklift portability. Heavy duty casters with sealed bearings and a chain & sprocket system ensure consistent and reliable turntable performance and a diamond pattern on the plate ensures better grip on any load to avoid slippage during the wrapping process.

The base plate is supported by coupled sealed bearings that deliver improved support. These improvements provide a low friction coefficient during rotation with a high resistance to compression and to deformation—the best possible performance with the lowest possible wear.

roll carriage

Technoplat 708 Robopac's Patented Power Variable Pre-Stretch Roll Carriage

Robopac's innovative and patented S-winding pattern and dual motor pre-stretch system give you the ability to pre-stretch film from 100% up to 400% using two independent, variable AC motors. Both the pre-stretch and containment force are adjustable via the operator control panel. Robopac's patented high-performance S-Wrap Pattern (with Quick Load System) and load cell compensation and containment force device give you total film control.

- 20" carriage standard
- 30" carriage optional



specifications

Technical Features

Technoplat 708

Performance

Production Speed	Up to 40 LPH
Turntable Speed	4-15 RPM
Turntable Drive	1 HP VAC

Load Handling

Turntable Size	65" diameter diamond plate
Maximum Load Height	110"
Maximum Load Weight	4,400 lbs

Film Delivery System

PVS

Film Delivery System	Power Variable Stretch
Standard Pre-Stretch	Variable to 400%
Containment Force	Variable Electronic
Corner Compensation	Load Cell
Roll Carriage Speed	Variable up and down
Standard Film Width	20"
Automatic Film Cut	Cut & Swipe Standard
Cut & Weld	Option
Load Height Detection	Infrared Photocell detects dark, clear and reflective products. Eliminates false reading of gaps in loads.

Safety Features

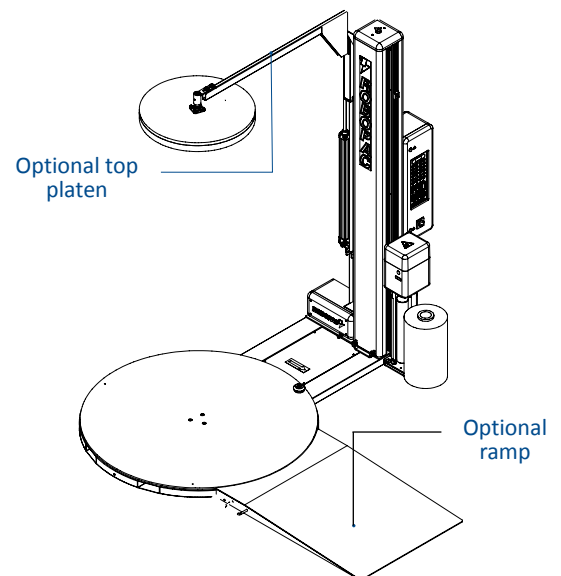
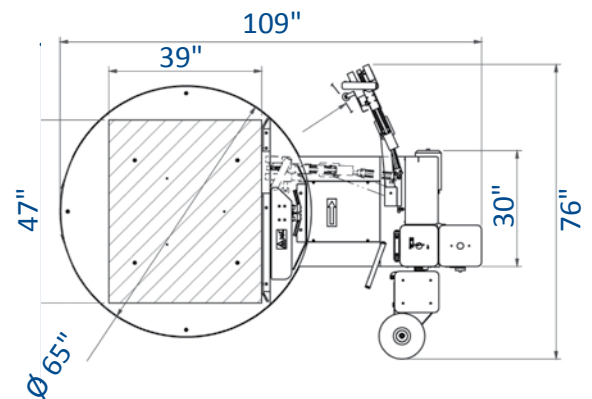
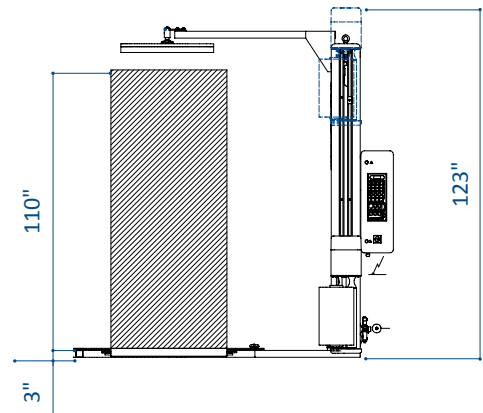
Roll Carriage Safety Stop	Standard
CE Compliant	Yes
Anti-Fall Device	Standard
Lock-Out/Tag-Out Compliant	Yes

Additional Features

Top Sheet Wrap	Standard
Banding	Standard
Forklift Portable	Front and rear

Service Requirements

Electric	110VAC/1ph/60Hz (+/-10%)
Pneumatic	60 PSI
NEMA 12 Enclosure	Standard
Warranty	3 Years



Features Adjustable via Control Panel

- Turntable rotation speed
- Upward/downward carriage speed
- Film tensioning
- Upward/downward Force to Load
- Pre-stretch ratio
- Upward/downward pre-stretch
- Bottom wraps
- Top wraps
- Wrapping start point
- Photocell sensing delay

Wrap Cycles and Custom Programs

- Top sheet cycle
- Top platen cycle (top platen is optional)
- Reinforcing wrap cycle
- 6 user defined programs