

SEMI AUTOMATIC

Very Low Profile Base

Available for ROTOPLAT 508 and 708 models.

*SAME GREAT FILM SAVINGS
SMALLER FOOTPRINT!*

INTRODUCING OUR **NEW** LOW PROFILE BASE

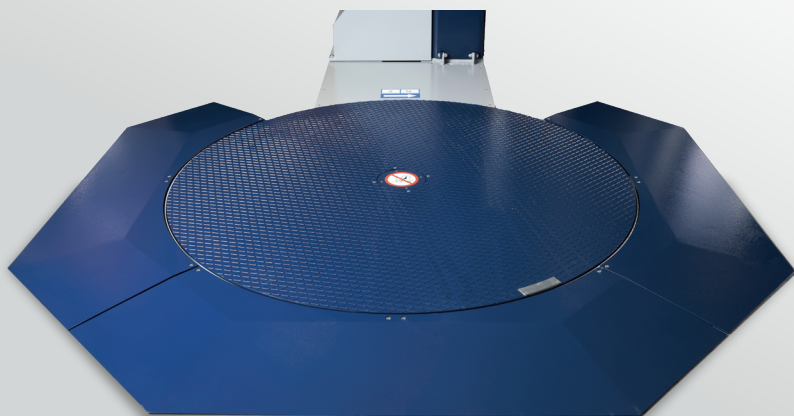
Benefits of the ROBOPAC Low Profile Base:

- ▶ SAVE SPACE - reduced dimensions
- ▶ RELIABILITY - high quality patented turntable design
- ▶ EASY LOADING - reduced base height
- ▶ FLEXIBILITY - access to loading from every side
- ▶ REDUCED HEIGHT - avoid frequent accidental bumps



ROBOPAC is the world leader in the design, production, integration and service of secondary packaging solutions. We offer a full line of configurable machinery to pack, palletize, and stretch wrap essentially any product in the food & beverage, personal care, pet food, pharmaceutical, dairy, automotive and industrial industries.

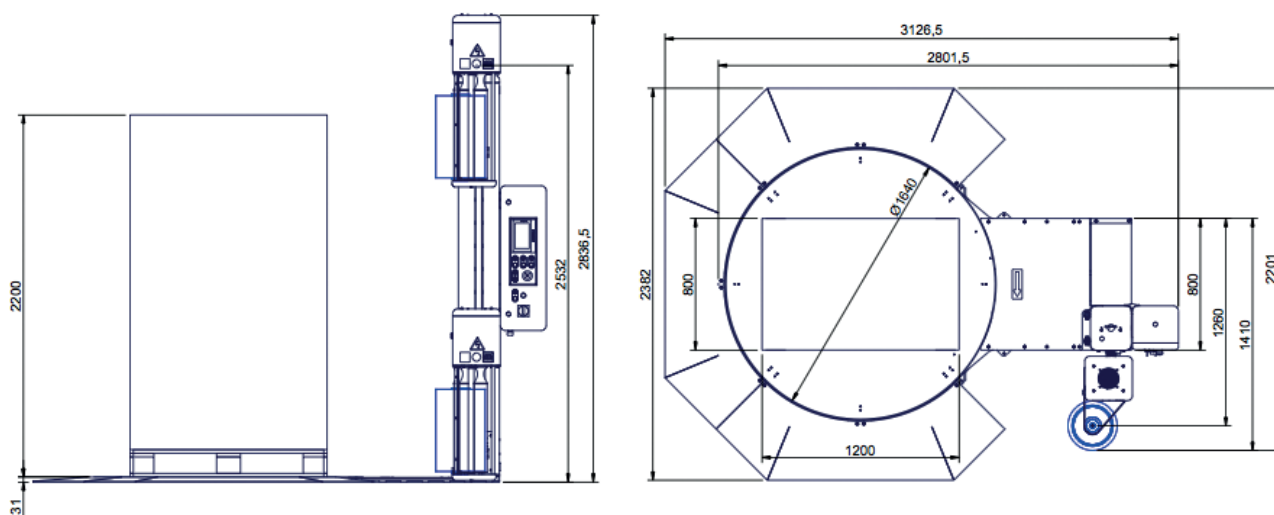
ROBOPAC installs thousands of semi-automatic stretch wrappers. **ROBOPAC** features fully automatics systems that can be integrated with existing conveyor. Our end-of-line packaging equipment is designed to increase productivity & efficiency. **ROBOPAC'S** patented innovation, **CUBE TECHNOLOGY®** saves film expense while increasing load containment. Optional **R-Connect®** allows for remote monitoring of wrapper performance including film consumption and predictive maintenance.



Standard 270° ramp
for loading and unloading.
Ideal for hand pallet trucks.

TECHNICAL FEATURES

- ▶ Plate diameter (in): **65"**
- ▶ Max Load Weight (lbs): **2600**
- ▶ Max Load Height (in): **87" Standard, Up to 122" Optional**
- ▶ Disc Support Wheels Number: **228**
- ▶ Soft Start: **Standard**
- ▶ Variable Turntable Rotation Speed (rpm): **5-12**



Rotoplat LP PVS Model